



Albert Kahn Associates, Inc.
The Fisher Building
3011 W. Grand Blvd., Suite 1800
Detroit, Michigan 48202-3000

Issue History

No.	Description	Date
019	SITE PERMIT	07/10/2023
000	REVIEW	06/29/2023
	APPEARANCE COMMITTEE	11/16/2022
	DD REVIEW	07/28/2022
	STRUCT & MEP UTILITY LOADS	07/12/2022
	PRELIM DD REVIEW	06/16/2022

No.	Description	Date
	Refer To Sheet Index For Complete Issue History	

DISCLAIMER:
The Albert Kahn Associates, Inc. regularly updates electronic files during the development of a project. As a result, the data included in any CAD file or drawing prior to its final release does not necessarily reflect the complete scope or content as defined in the contract. The contents in these files may therefore be outdated, inaccurate, or otherwise not suitable for use. Furthermore, the information contained herein is the exclusive property of Albert Kahn Associates, Inc. The original files represented here by this information shall not be used, altered, or reproduced in any manner without the expressed written consent of the Albert Kahn Associates, Inc.

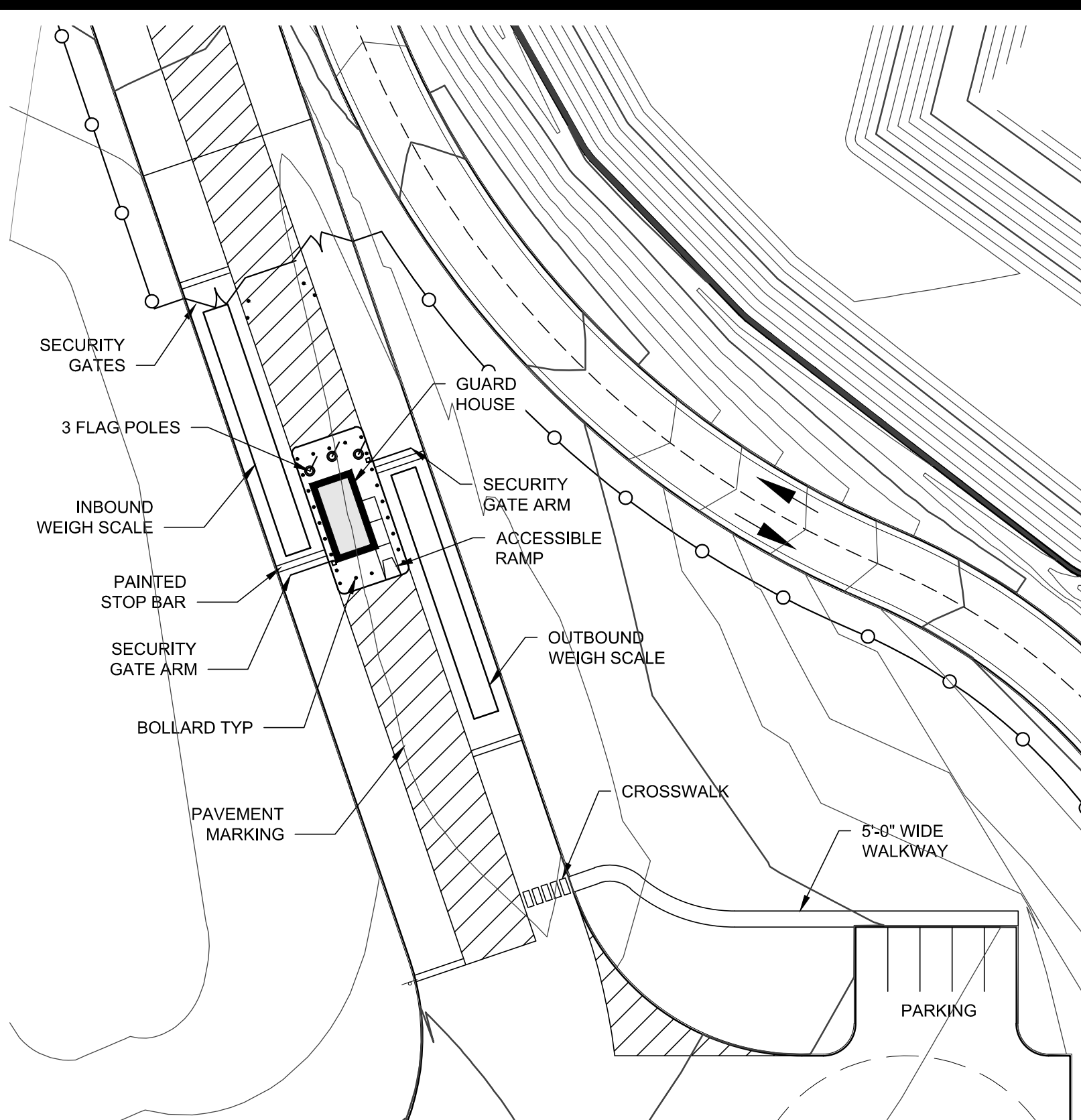
Registration Seal
FOR PERMIT ONLY

Key Plan

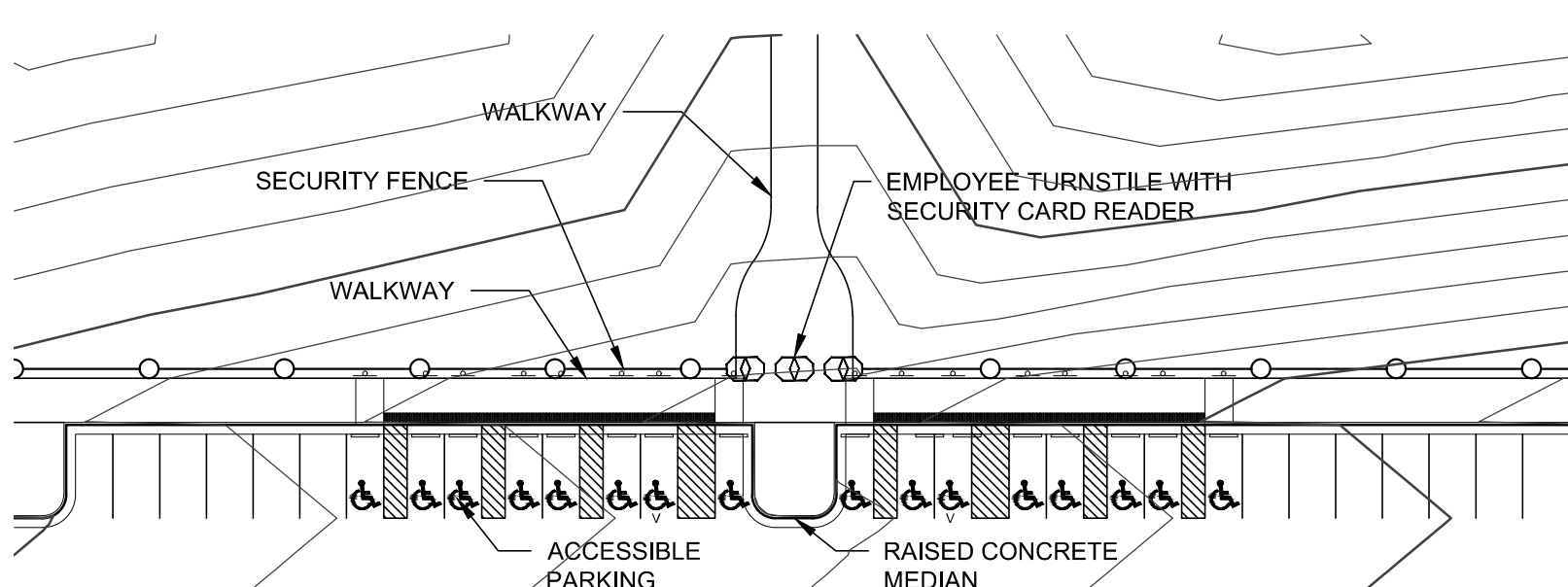


In Charge C. MONTAGUE
Designed RMP
Drawn By RMP
Checked SAW
Approved _____ Date _____
Sheet Title

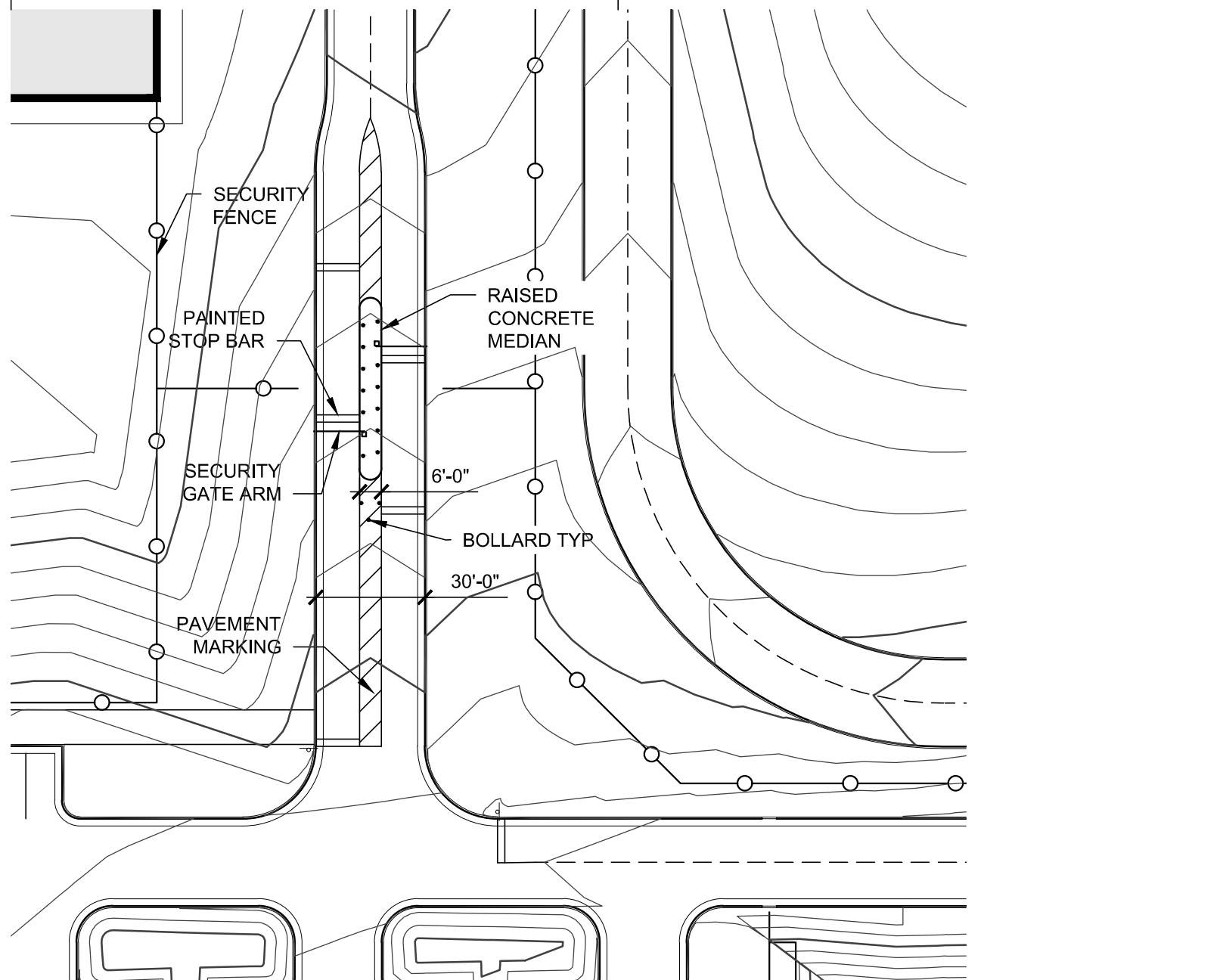
SITE PLAN
Job No. 3423-00
Sheet No. 00-LS-101



2 GUARDHOUSE AND WEIGH STATION PLAN
1" = 40'-0"



3 TYPICAL TURNSTILE PLAN
1" = 40'-0"



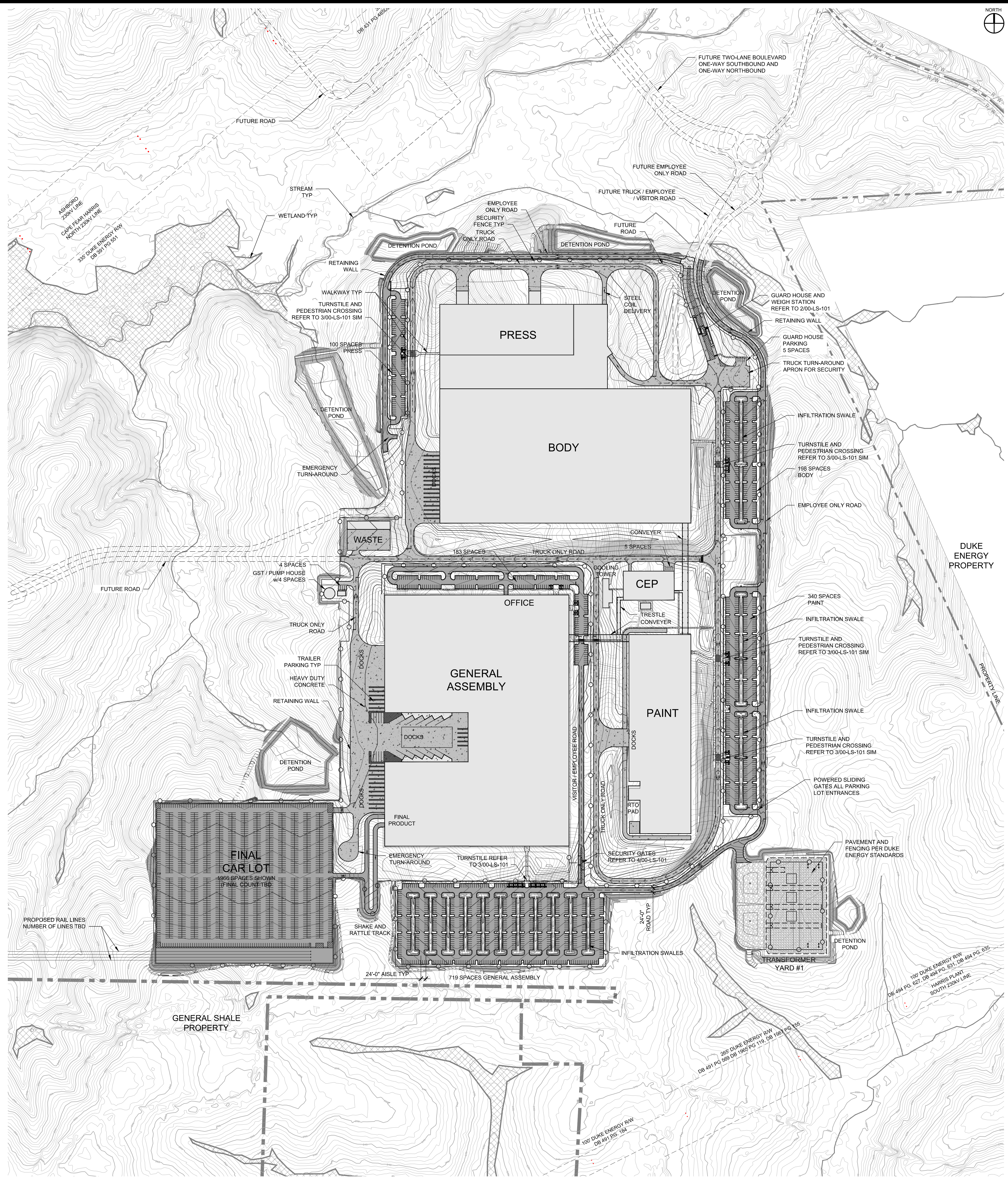
4 SECURITY GATES
1" = 40'-0"

LEGEND

- HEAVY DUTY ASPHALT
- NORMAL DUTY ASPHALT
- HEAVY DUTY CONCRETE
- WETLAND
- SECURITY FENCE
- BF BARRIER-FREE PARKING
- FLAGPOLE
- TRAFFIC FLOW

NOTE:
1. THIS PLAN FOR REFERENCE ONLY. REFER TO CIVIL FOR ALL LAYOUT, PAVING, GRADING, AND UTILITY INFORMATION.

PROJECT SITE INFORMATION
ZONING: HEAVY INDUSTRIAL DISTRICT (IND-H)
PROPERTY AREA: 80,973,012 sf (1,859 acres)
PROJECT SITE: 8,799,185 sf (202 acres - 11% of total site area)



1 SITE PLAN
1" = 200'-0"

File Path: C:\Users\alcah\OneDrive\Documents\20230520\00-LS-101\Gen_A_21_Monday.rvt